

# Mesh analysis and subdomain size study in human lamina cribrosa

ARC 2021

Presented by: **Hirut Kollech**

PI: **Jonathan Vande Geest, PhD**

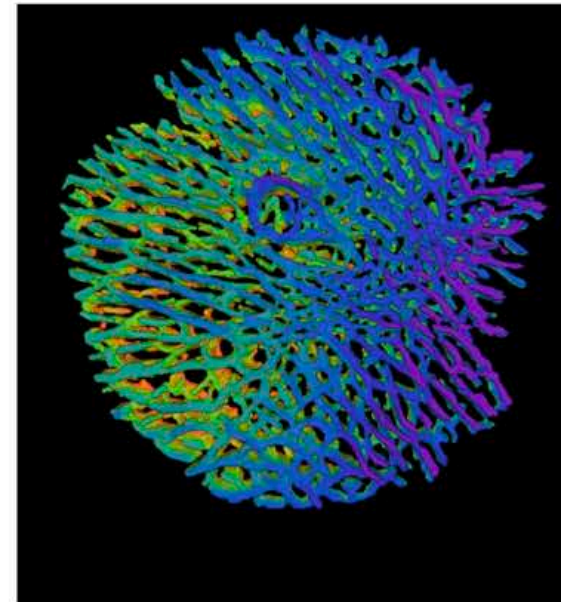
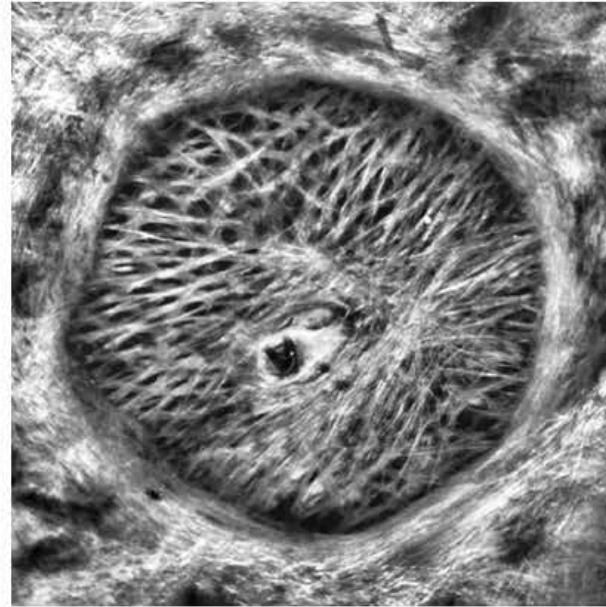
Department of Bioengineering

Swanson School of Engineering

McGowan Institute for Regenerative Medicine

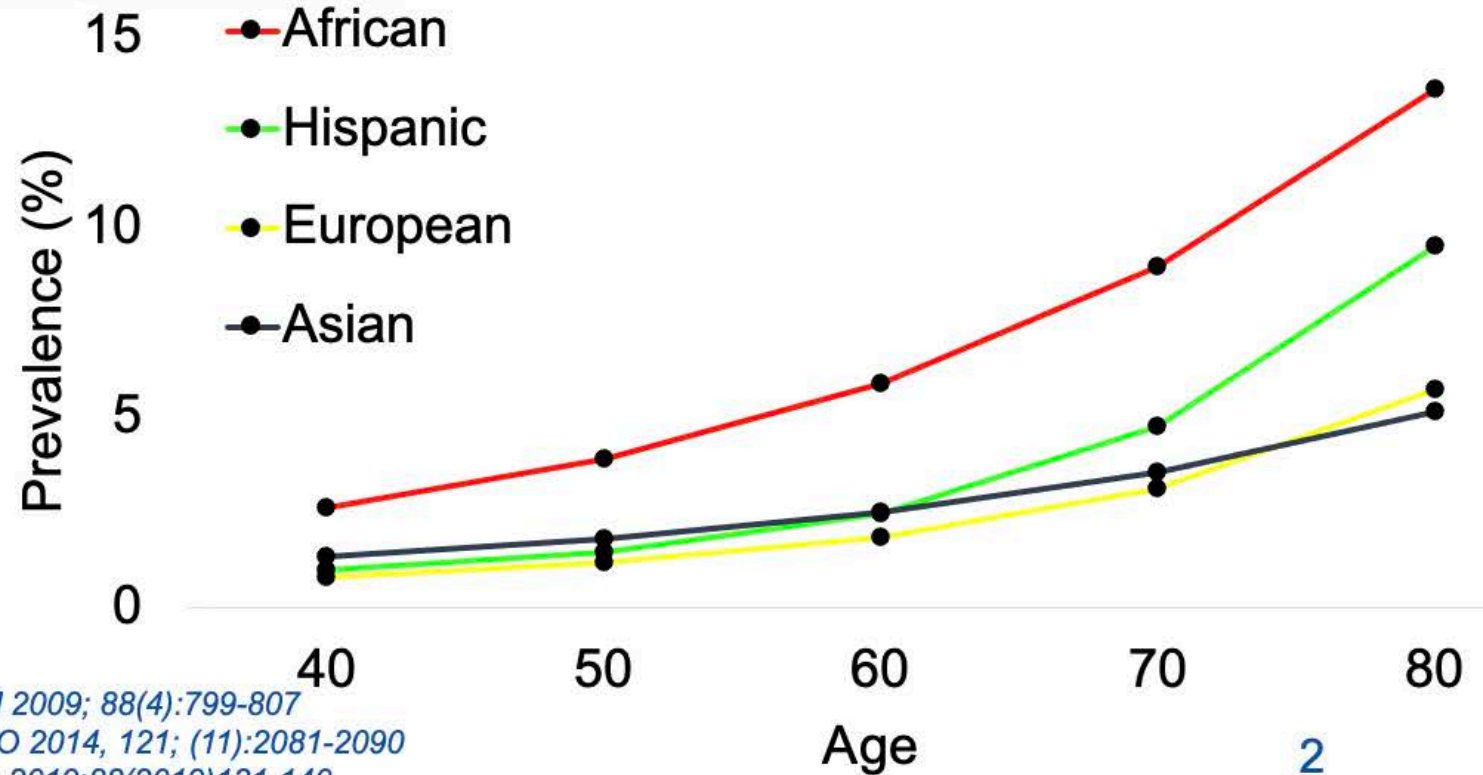
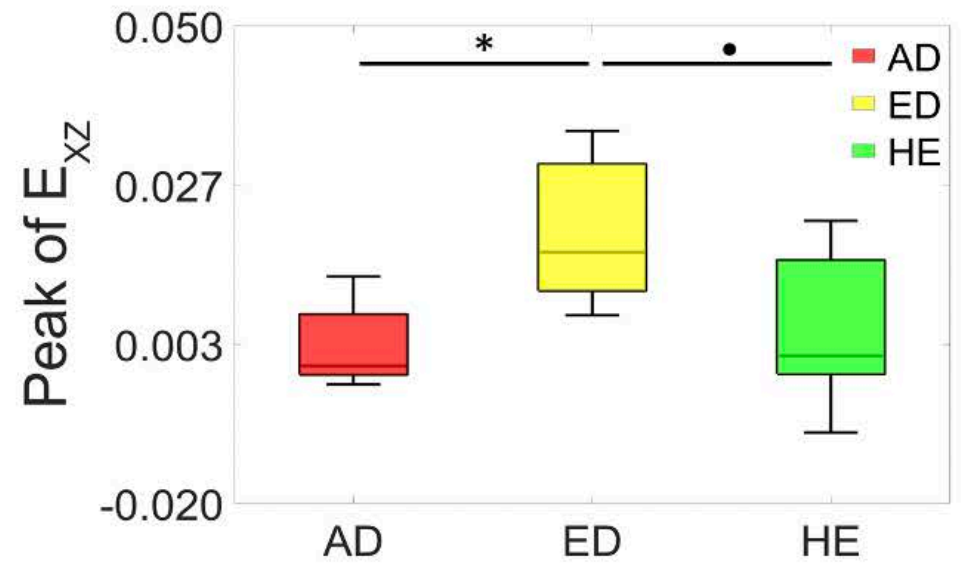
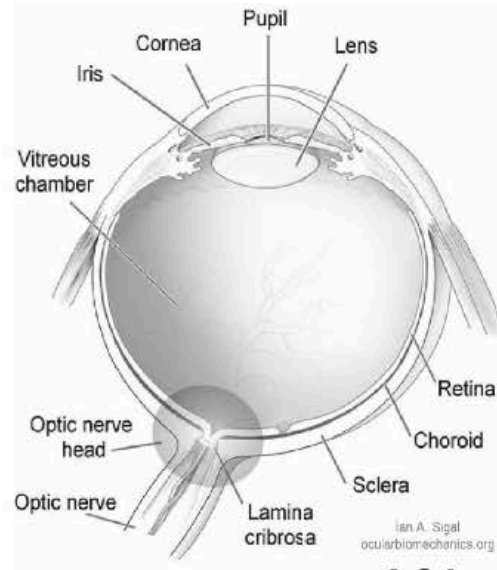
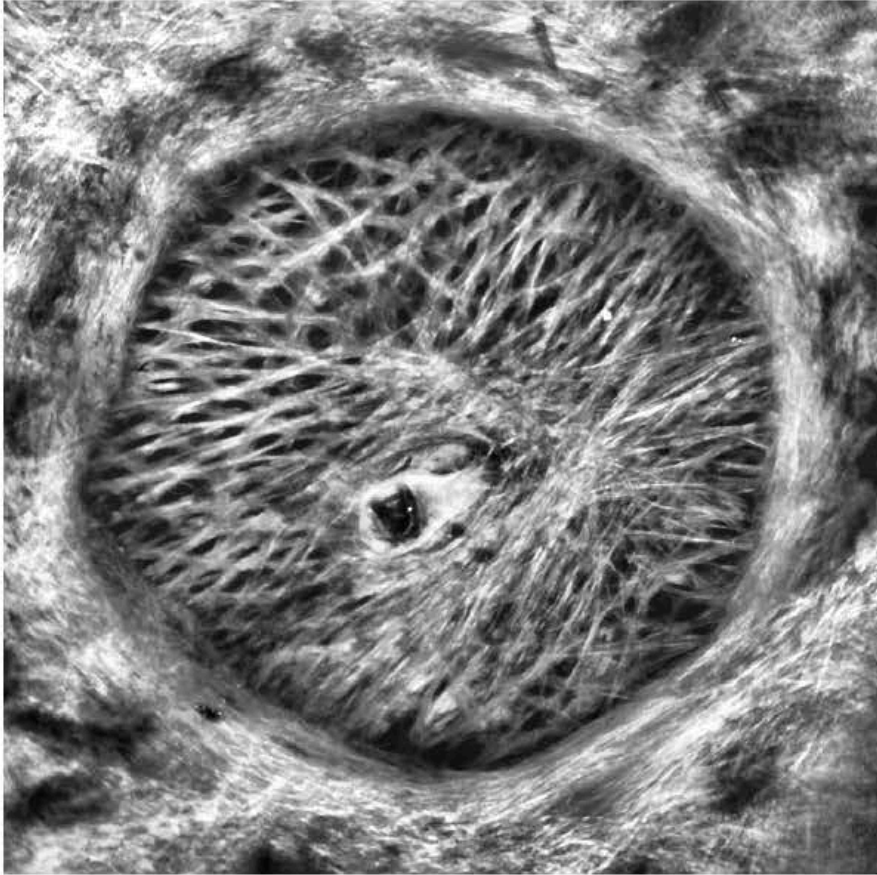
Vascular Medicine Institute

Louis J. Fox Center for Vision Restoration



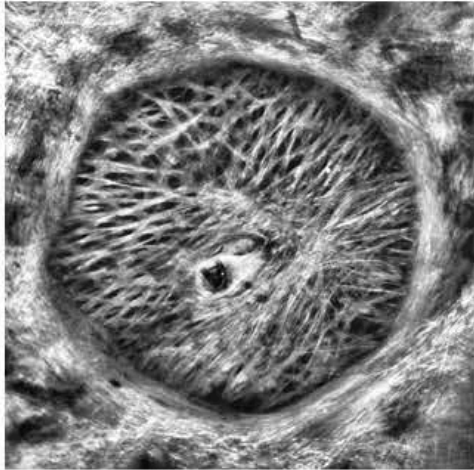


# Motivation

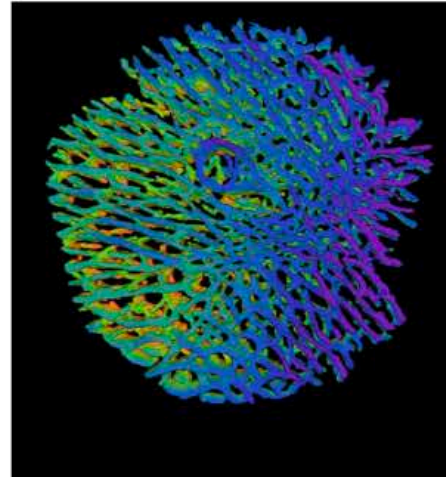


# Overview

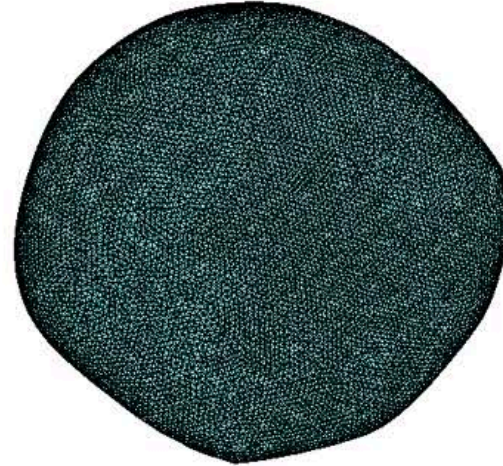
2P SHG image



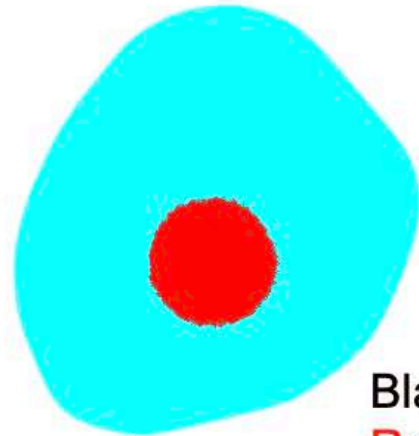
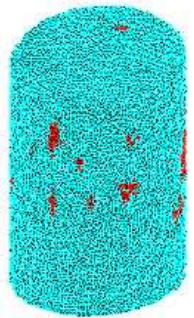
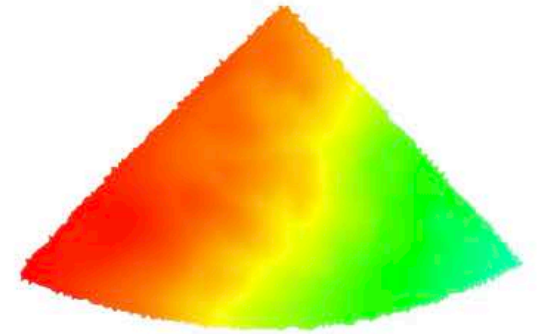
Segmented LC image



LC mesh



FE simulation (1/8<sup>th</sup> of LC)



Black - collagen  
Red - non collagen



# Preliminary results from current DOE

❑ Subdomain radius (60-300 microns)

❑ Mesh convergence (element size 2-20 microns)

